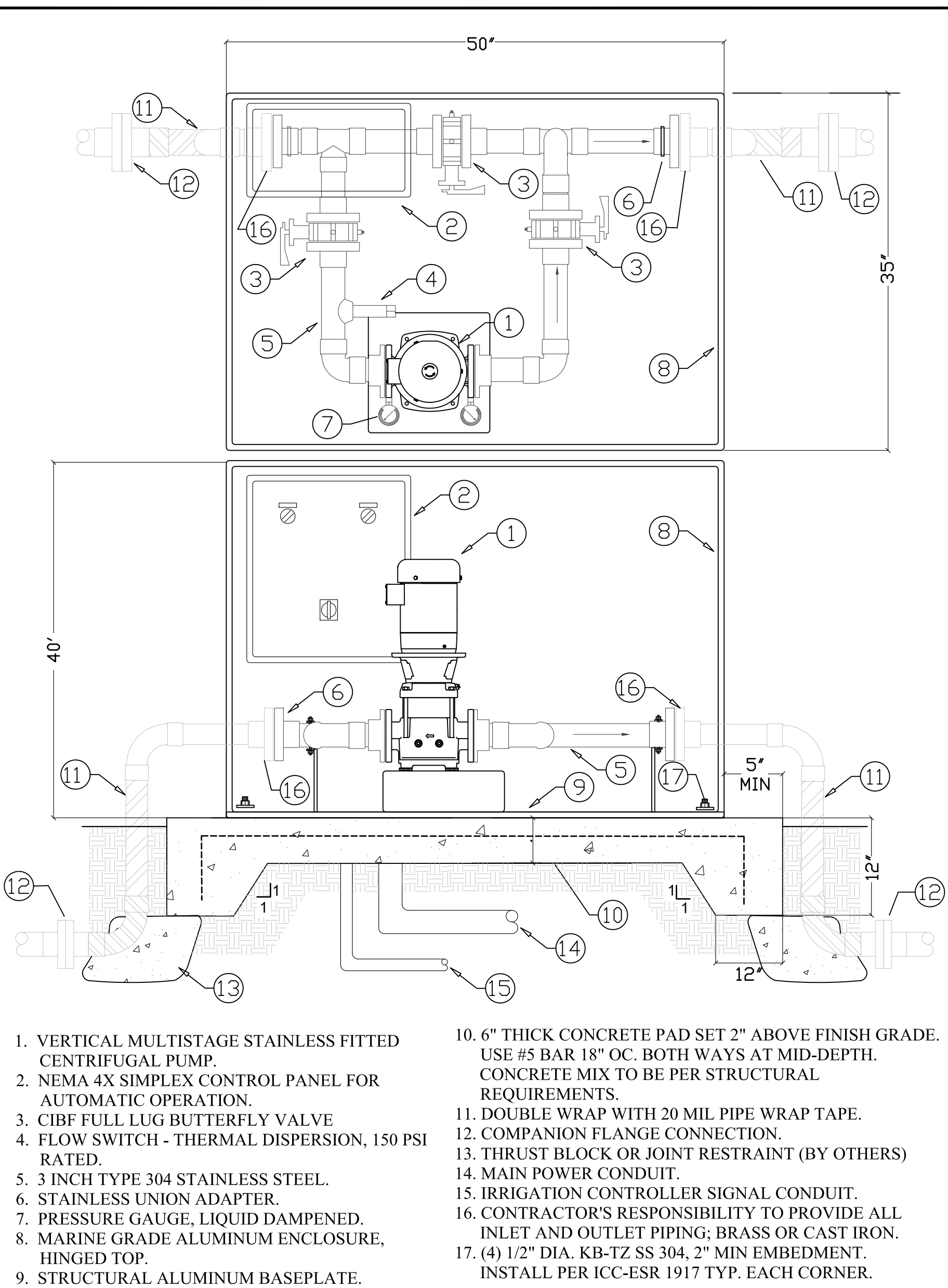
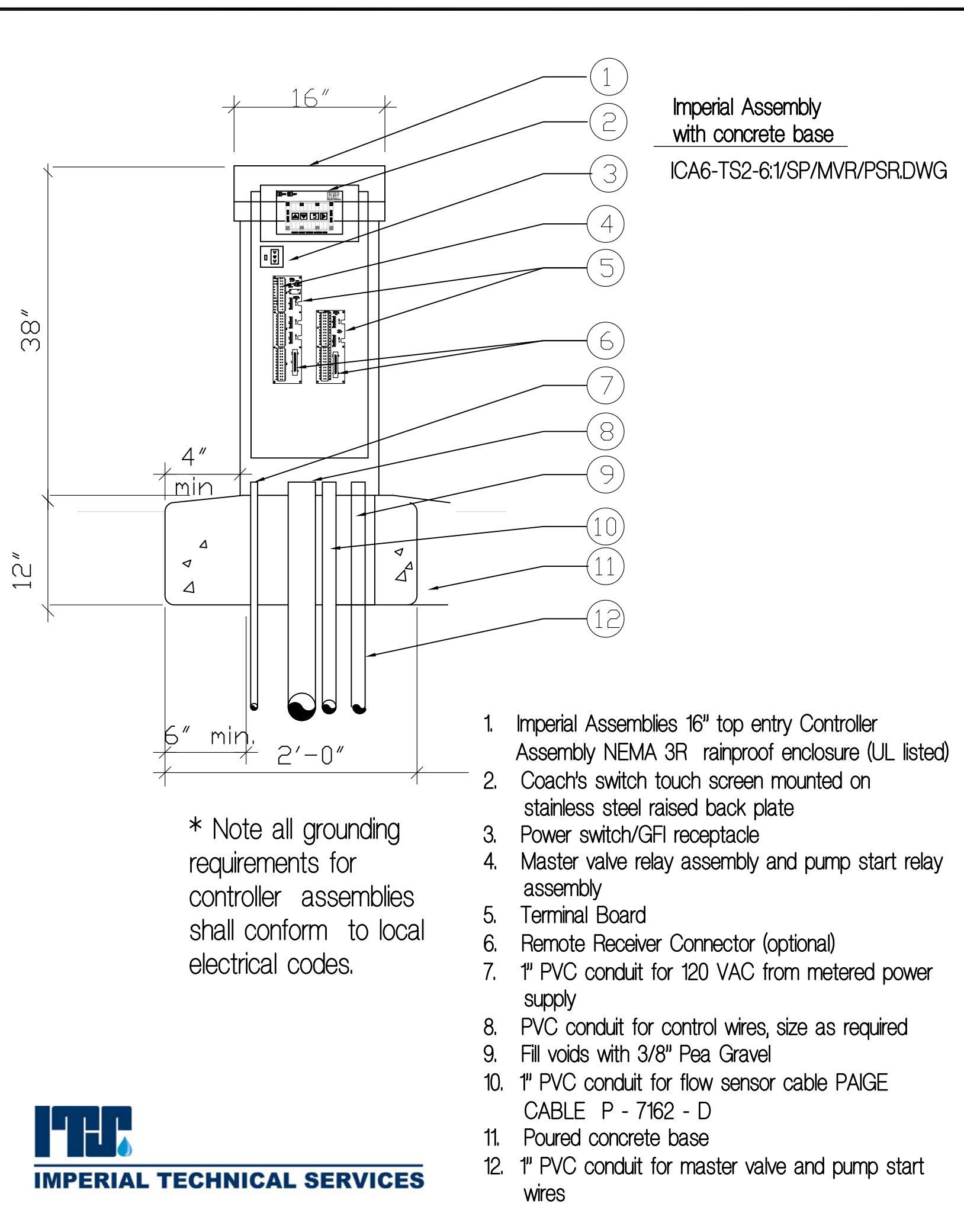
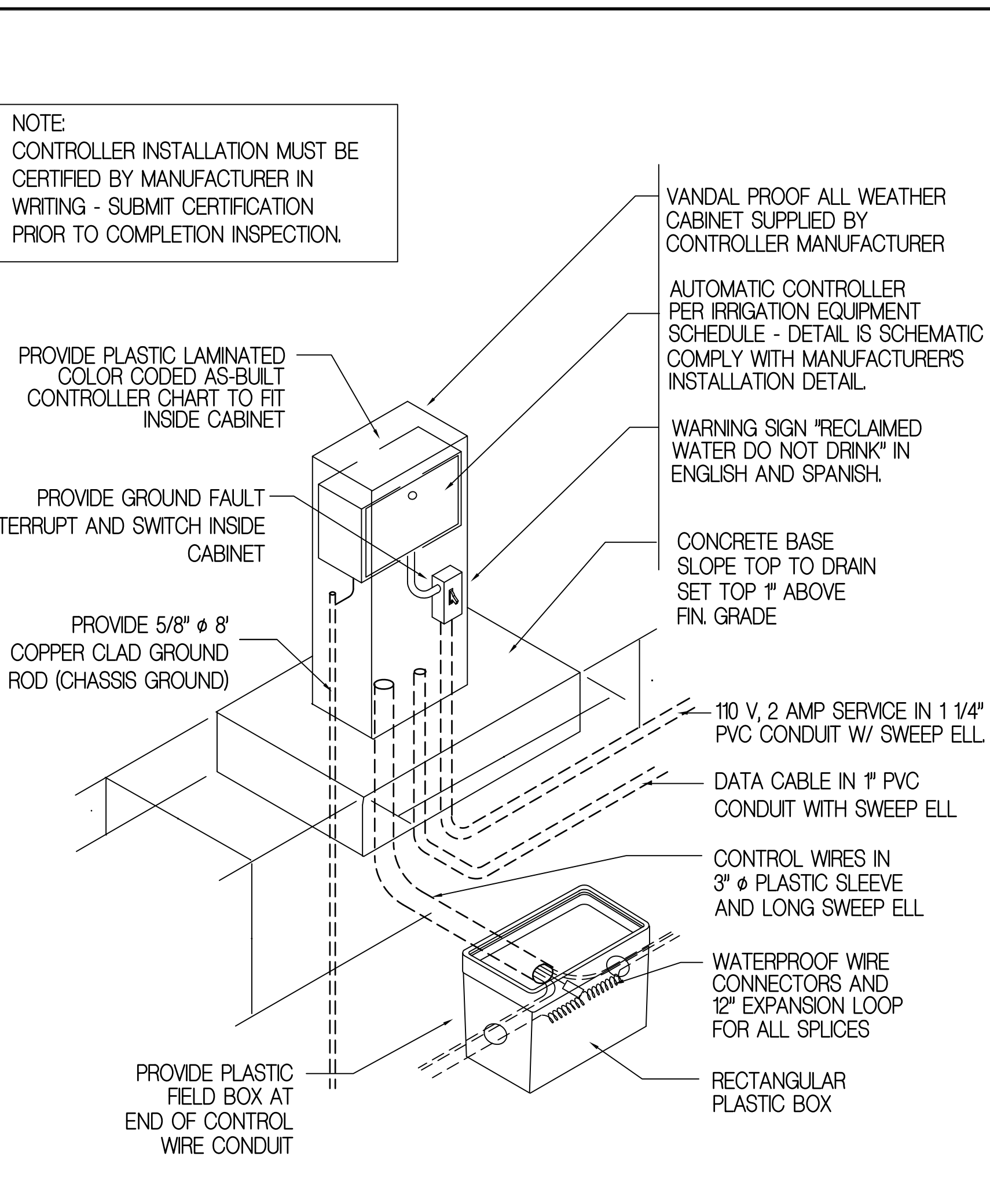
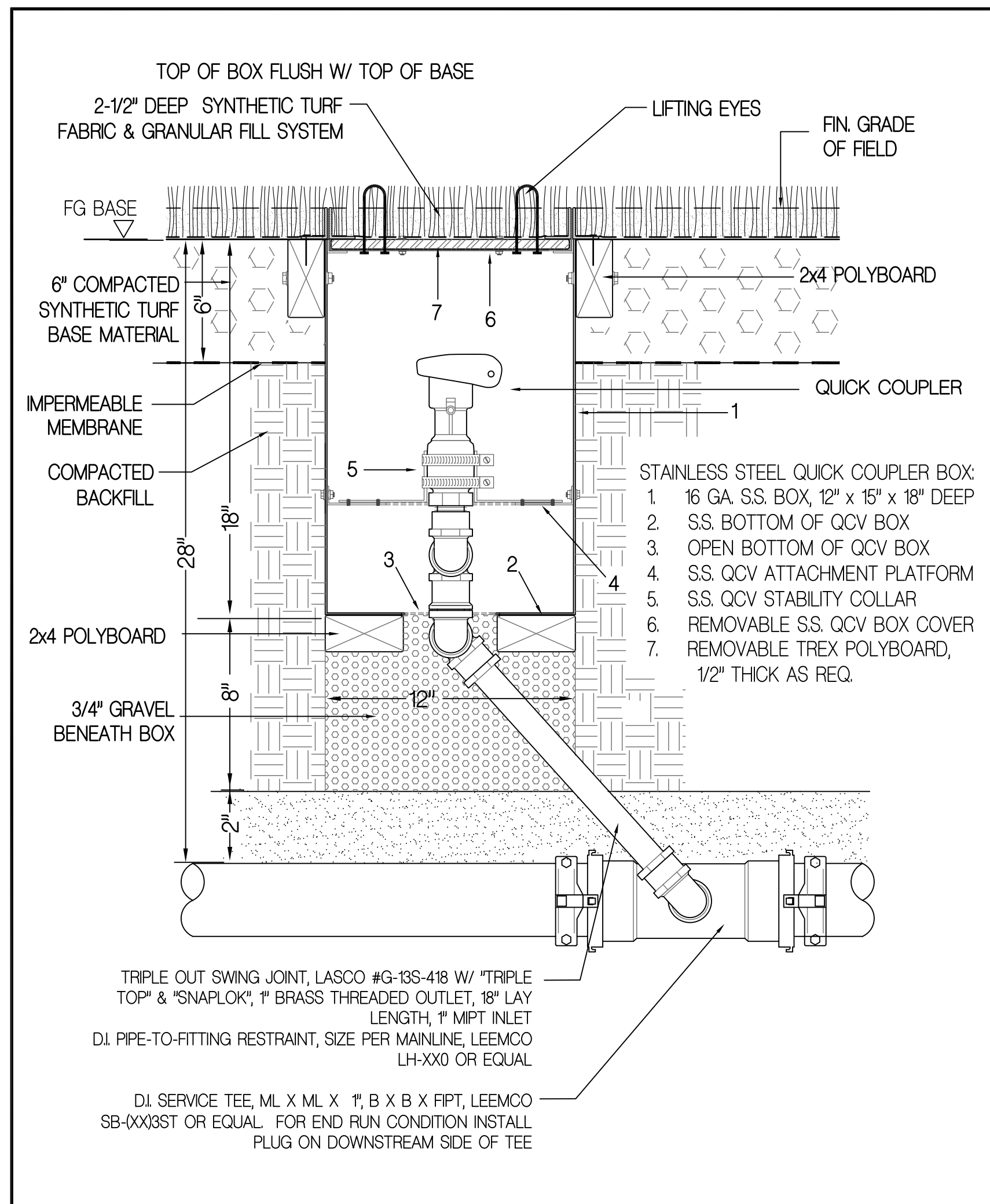
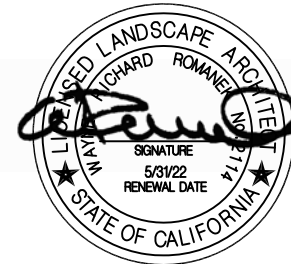


REVISIONS

CONSULTANT  
CARTER, ROMANEK  
Landscape Architects, Inc.  
28720 Roadside Drive, Suite 100  
Agoura Hills, California 91301  
818477-5800



QUICK COUPLER IN TURF

5

IRRIGATION CONTROLLER

4

COACHE'S SWITCH

3

JOINT RESTRAINT CRITERIA  
DISTANCE CHART

- ALL TEES, BENDS, REDUCERS AND END CAPS SHALL BE RESTRAINED USING LH SERIES. ADDITIONAL JOINTS SHALL BE RESTRAINED AS SET OUT IN TABLE BELOW. TABLE LISTS THE MINIMUM LENGTH (IN FEET) FOR EACH SIZE AND TYPE OF FITTING WITHIN WHICH ALL ADJACENT JOINTS MUST BE RESTRAINED.
- FOR EXAMPLE, 3-INCH MAINLINE TO BE INSTALLED WITH A DIRECTIONAL CHANGE OF 90 DEGREES, CHART UNDER PIPE SIZE 3" AND UNDER BENDS 90 INDICATES A DISTANCE OF 26 FEET. IF ANY JOINTS (INCLUDING BELLS, VALVES, ETC) OCCUR WITHIN 26 FEET OF THE DIRECTIONAL CHANGE, THEY MUST BE RESTRAINED.
- ALL FITTINGS AND JOINT RESTRAINTS SHALL BE INSTALLED PER MANUFACTURERS RECOMMENDATIONS AND SPECIFICATIONS.

MINIMUM RESTRAINED LENGTH IN FEET

PIPE SIZE	BENDS				TEE BRANCH	REDUCERS			DEAD END	GATE VALVE
	11	22	45	90		1 STEP	2 STEP	3 STEP		
2"	1'	2'	7'	22'	22'	-	-	-	4'	33'
2-1/2"	1'	4'	8'	24'	24'	22'	-	-	58'	35'
3"	3'	5'	11'	26'	26'	25'	-	-	82'	41'
4"	4'	6'	13'	31'	31'	70'	-	-	97'	50'
6"	5'	8'	19'	45'	45'	70'	91'	96'	136'	68'

Chart based on 150psi line pressure, 24" cover, silty soil and safety factor of 2.

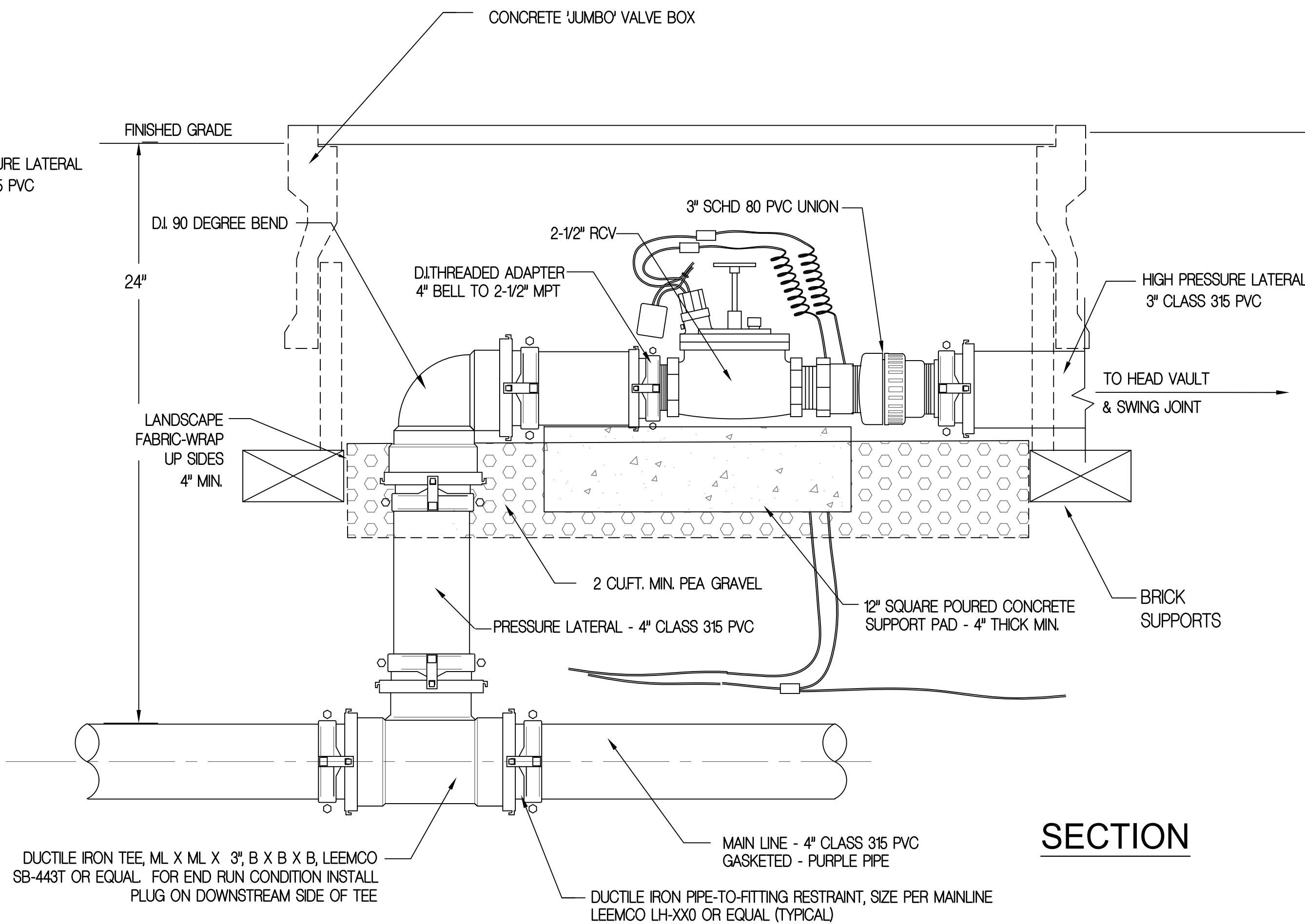
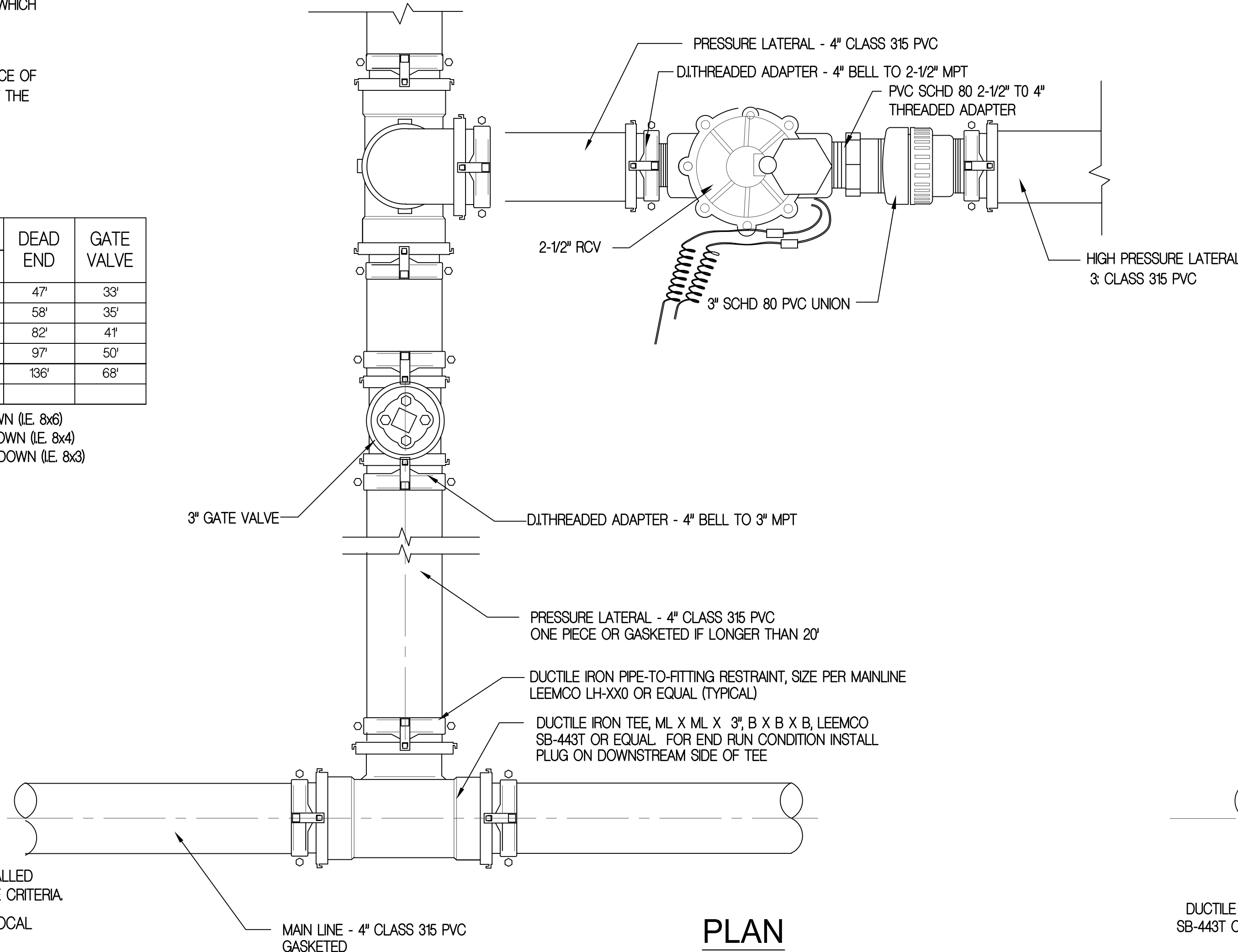
- 1 STEP REDUCTION IS ONE PIPE SIZE DOWN (IE. 8x6)
- 2 STEP REDUCTION IS TWO PIPE SIZES DOWN (IE. 8x4)
- 3 STEP REDUCTION IS THREE PIPE SIZES DOWN (IE. 8x3)

INSTALLATION CHART

- REFER TO THE FOLLOWING TABLE WHICH LISTS THE NUMBER OF BOLTS, SIZE AND TORQUE FOR EACH BOLT IN REFERENCE TO THE SIZE OF PIPE WHICH IS BEING RESTRAINED.
- FOR EXAMPLE, 3-INCH PIPE, USE (2) 3/8" x 2-1/2" BOLTS FOR EACH RESTRAINT AND TIGHTEN THEM WITH A TORQUE WRENCH TO 20 FT-LBS.

PIPE SIZE	NO. BOLTS	BOLT SIZE	TORQUE FT-LBS
2"	2	3/8" x 2-1/2"	20
2-1/2"	2	3/8" x 2-1/2"	20
3"	2	3/8" x 2-1/2"	20
4"	2	1/2" x 3"	48
6"	2	1/2" x 3"	48

- NOTES:
- ALL MAINLINES FOR SYNTHETIC TURF COOL-DOWN SYSTEMS SHALL BE INSTALLED WITH DUCTILE IRON FITTINGS AND JOINT RESTRAINTS FOLLOWING THE ABOVE CRITERIA.
  - CONDUCT A PRE-CONSTRUCTION MEETING WITH THE MANUFACTURERS LOCAL REP TO REVIEW INSTALLATION AND LAYOUT REQUIREMENTS.
  - CHARTS BASED ON LEEMCO FITTINGS. FOLLOW REQUIREMENTS OF SPECIFIC MANUFACTURER.



HIGH PRESSURE MAIN LINE W/ DUCTILE IRON JOINTS

2

NORWALK LA MIRADA UNIFIED SCHOOL DISTRICT  
LA MIRADA HIGH SCHOOL NEW FOOTBALL STADIUM PROJECT  
13520 ADELFA DRIVE, LA MIRADA, CA 90638

DSA # 03-120551

NAC  
ARCHITECTURE

NAC NO. 161-19015  
DATE: 12-10-2020

DSA BACKCHECK  
SUBMISSION

FIELD COOLING  
AND IRRIGATION  
UPGRADE DETAILS

TF 2.33